

TEST ITEMS

Basic blood-gas	Haematology	Electrolyte	Biochemistry
pH, pCO ₂ , pO ₂	Hct	K ⁺ , Na ⁺ , Ca ⁺⁺ , Cl ⁻	Glu, Lac

CALCULATION PARAMETERS

Total 24 Parameters:

cH⁺, cH⁺(T), pH(T), pCO₂(T), pO₂(T), HCO₃atd, HCO₃std, BB(B), BE(B), BE(ecf), ct CO₂, Ca⁺⁺(7.4), AnGap, tHb(est), sO₂(est), pO₂(A-a), pO₂(A-a)(T), pO₂(a/A), pO₂(a/A)(T), RI, RI(T), pO₂/FI O₂, pO₂(T)/FI O₂, POP

TEST PACKAGES

Cat. No.	Test Item	Qualification
W459	pH, pCO ₂ , pO ₂	CE NMPA
W461	K ⁺ , Na ⁺ , Ca ⁺⁺ , Cl ⁻	CE NMPA
W465	pH, pCO ₂ , pO ₂ , K ⁺ , Na ⁺ , Cl ⁻ , Ca ⁺⁺ , Hct	CE NMPA
W466	pH, pCO ₂ , pO ₂ , K ⁺ , Na ⁺ , Cl ⁻ , Ca ⁺⁺ , Hct, Glu, Lac	CE NMPA



Fight for time and grab treatment opportunity for critical patients whenever wherever!

Blood Gas Analyzer
 • Reliable • Portable • Accurate • Efficient



BGA-102

CE NMPA

1 BENIFITS

Automatic Sampling Process

Without manual operation, the procedure is more simple.

Maintenance Free

Compact instrument design, no internal liquid path, no need for maintenance.

Easy To Use

Only two steps are required to complete one sample test.

Accurate Results

Good correlation with the Radiometer and help doctors make a diagnosis.

Carry With Ease

Small and light, humanized handle makes it easier to carry.



302(L)*226(W)*180(H) mm
No more than 6.5 kg
(including battery but no power adapter)

Design advantages make it adapt to different scenarios.



Battery powered



Built-in Printer



LIS Connect Function



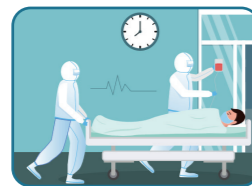
Operate Video

2 APPLICATION SCENARIOS

Necessary equipment for medical institutions to treat critically ill patients.



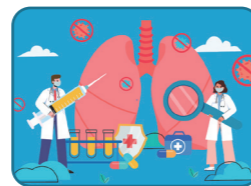
ICU/CCU/NICU



ER



OR



Pneumology Department



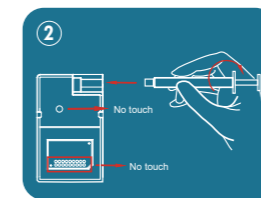
Ambulance

3 OPERATION

Two-steps operation, One complete test.



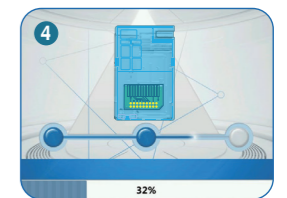
Sampling



Connecting



Inserting

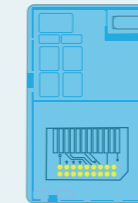


Reading

4 COMPONENTS

Less product component, better user experience.

Test Card



One test card, multiple solutions.

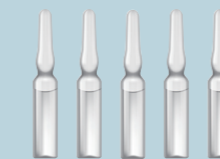
- Sample Type: Arterial Whole Blood
- Sample Volume: 80 μ L
- Test Time: 45 s
- Store at room temperature for up to 12 months (for W466: up to 9 months)
- Suitable for syringe

Reagent Pack



- Storage Condition: 2~8°C
- Shelf Life: 12 months
- Installed Life:
10 parameters: 45 days
8 parameters: 60 days

Quality Control



- 3 levels quality control analysis
- External quality control