

SonoScape

P11 Elite

Smart Examination at
Your Fingertips



SonoScape

SonoScape Medical Corp.

2F, 12th Building, Shenzhen Software Park Phase II, Keji
Middle 2nd Road, Nanshan District, Shenzhen 518057,
Guangdong, China
Tel: +86-755-26722890 Fax: +86-755-26722850
Email: market@sonoscape.net www.sonoscape.com

© 2022 SonoScape Medical Corp.
All rights are reserved.

SonoScape Medical reserves the right to change the above
information and discontinue any product at any time
without prior notification and will not be liable for any
consequences resulting from the use of this publication.

U-P11E20221227



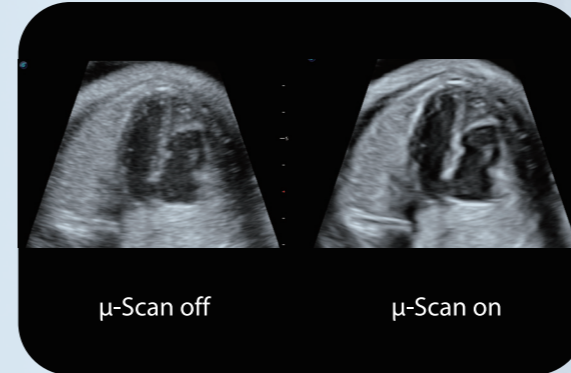
Equipped with smart measurement and analysis tools, P11 Elite ensures steady performance and speeds up your daily examination with efficiency, accuracy and consistency. This is a highly reliable product which designed with an intuitive user interface to maximize patients' comfort during well-rounded evaluations.

Extraordinary Image Technologies

With the outstanding clear view provided by SonoScape's advanced imaging technologies and optimized transducers, you can make clinical decisions with greater confidence.

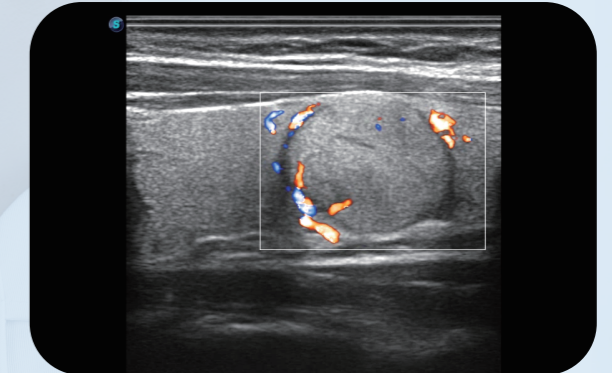
μ-Scan

The new generation μ-Scan imaging technology greatly improves the visibility of organs and lesions. The high-definition contrast resolution will suppress speckle artifacts while maintaining real tissue architecture.



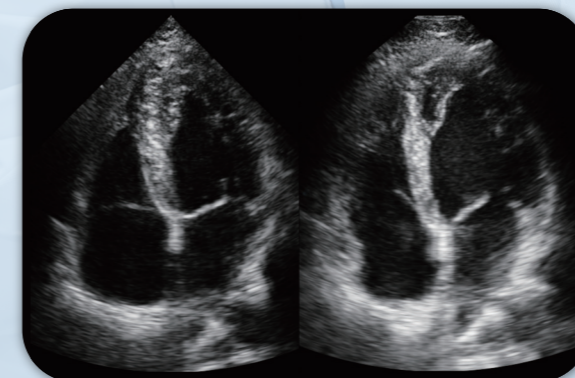
SR Flow

As a new innovative technology, SR Flow improves the capability of detecting low velocity flow signals. It also improves on spatial resolution and overcomes overflow to present users with real hemodynamic information.



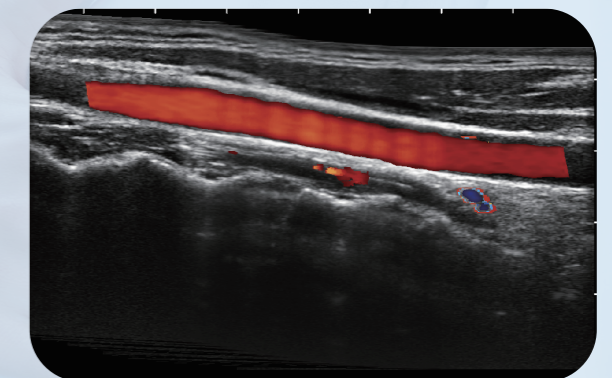
WideScan

With WideScan, the ultrasound image can be enlarged when performing a real time scan by using linear, convex or phased array probe, for a more complete view of large lesions or anatomic structures.



Real-time Color Panoramic

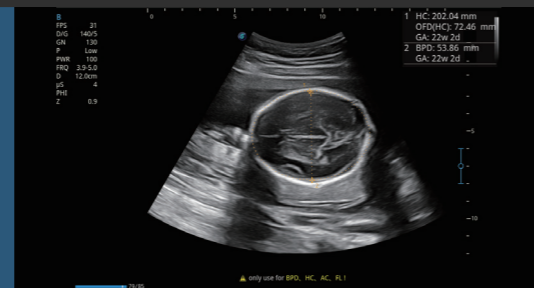
With the combination of color flow and real-time panoramic, visualizing the blood flow of an entire vein or artery is now an easy task. Accomplished in real-time for the convenience of the sonographers, any mistake can also be easily back tracked and corrected without interrupting the scan.



Effortless Workflow for Productivity

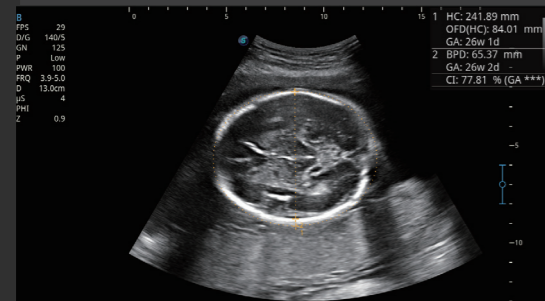
S-Fetus

Based on a big data dependable deep learning algorithm, S-Fetus is a brilliant one-step solution for automatic standard plane acquisition and measurement. With just one click, common fetal biometry results are obtained with high intelligence, accuracy and efficiency, aiming for an unprecedented ease during operation.



Auto OB

Less keystroke required while achieving more sensitive and advanced automated common fetal biometry.



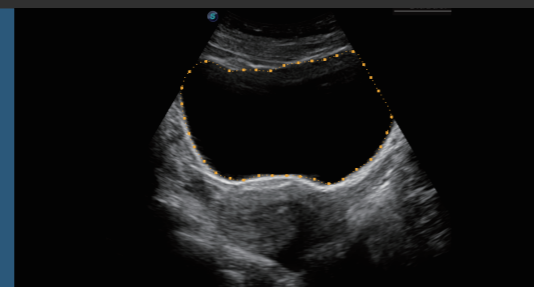
Auto NT

Auto NT helps doctors quickly calculate nuchal translucency thickness and maximizes accuracy compared to manual measurements.



Auto Bladder

One key bladder wall tracing and volume measurement from Auto Bladder can efficiently provide more accurate contour and results, which is not subject to the bladder shape and size.



One-button Optimization

Auto works as a shortcut key that helps to adjust important imaging parameters and optimize image display automatically. It is available under B mode, CFM mode and PW mode.

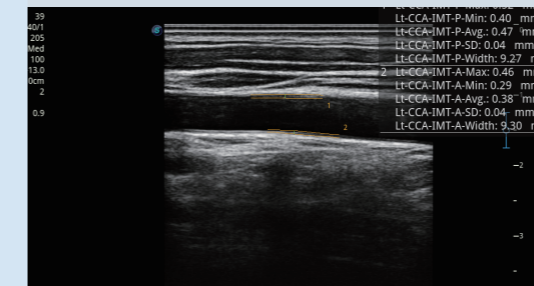


Sono Assistant

Customizable scanning protocol helps streamline workflow while increasing standardization and reducing keystrokes and exam time.

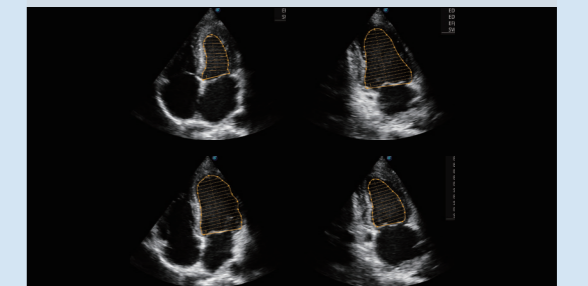
Auto IMT

To give a quick measurement of carotid intima-media thickness ensures good reproducibility and high diagnostic efficiency.



Auto EF

To recognize myocardial intima during diastolic and systolic period and calculates the ejection fraction automatically.



User-friendly Design



21.5-inch LED monitor



13.3-inch tilting touch screen



Height-adjustable and rotatable control panel



Multi-stage temperature control gel warmer



Detachable large capacity battery



Sliding keyboard



User Interaction with Care

Sono-Help

An inspiring tutorial displaying probe placement, anatomy illustration and standard ultrasound image examples. As a useful reference less experienced clinicians could rely on, Sono-Help covers a variety of applications including liver, kidney, cardiac, breast, thyroid, obstetrics, vascular, etc.

Sono-Drop

Sono-Drop allows wireless connection between P11 Elite and smartphones where ultrasound images can be shared to patients and their families.

Sono-Synch

Real-time interface and camera sharing, enabled by Sono-Synch, makes it possible to connect two ultrasounds in a remote distance and perform remote medical consultation and tutorial.

