

# SonoScape

Caring for Life through Innovation



**S9**  
Touch Your Surprise

2008 FROST & SULLIVAN  
Entrepreneurial Company Award

2009 FROST & SULLIVAN  
Product Quality Leadership Award



reddot design award  
winner 2011

CE 0434

**SonoScape Co., Ltd.**

Yizhe Building, Yuquan Road, Shenzhen, 518051, China

Tel: +86-755-26722890 Fax: +86-755-26722850 E-mail: market@sonoscape.net

[www.sonoscape.com](http://www.sonoscape.com)

What premium portable ultrasound system should be?

# Compact, Powerful, Stylish is the definition for S9.

Ten years ago, SonoScape released the first LCD portable color Doppler system in the world; today, S9 is born for innovation. Compact yet featuring full application packages for cardiology, abdominal, OB/GYN, small parts, urology and so on. Combining with cutting-edge technologies and futuristic operation design, S9 gives you the best solution between outstanding Performance and Style.



**S9** Touch Your Surprise

# Not just Compact

Take your premium performance anywhere. SonoScape S9 delivers the latest technological innovations with high-integrated chips and excellent portability.



- 45° adjustable 15" LCD monitor



- 13.3 inch touch panel with 135 degree convertible open angle



- Two electronic connectors



- Remote Control

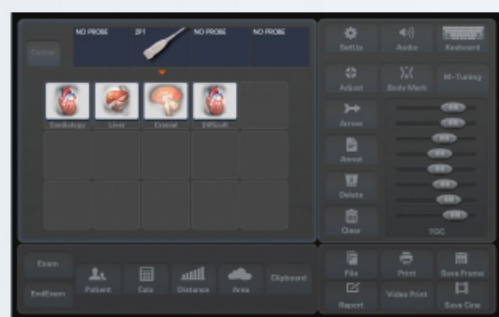


- Light Weight



# Not Just Smart

SonoScape ultrasound systems have always been synonymous with usability and functionality. The S9 is no exception. From instant touch screen access to design of remote control, the SonoScape S9 is designed with users and usability in mind.



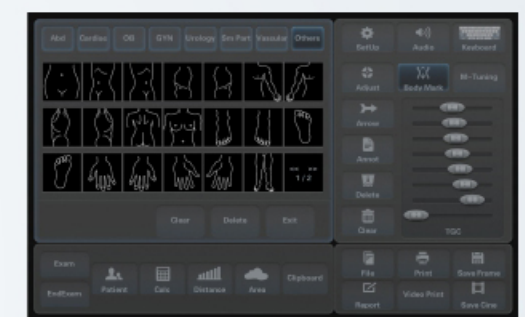
**Intuitive Graphic Icon**  
Help you enter into Exam mode by one touch



**Convenient Adjustment**  
All parameters could be adjusted by smart touch screen



**Alphabet Keyboard**  
Insure you can input patient information and comment in the easiest way



**Specific Packages**  
All measurement items, body marks and annotations are divided into different applications



# Not Just Powerful

## High Density Probe

S9 can provide high density phased array probe to meet the needs for both high frame rate and premium resolution in the cardiac imaging. Thanks for the high sensitivity of color Doppler mapping of SonoScape, S9 shows accurate cardiac diagnosis beyond your imagination.

## Elastography

S9 endows with the new method to support the sonographers in assessing tissue elasticity. The differences in tissue responses are detected and visualized in real-time by the elastography algorithms through different graphical representations.

## Stress Echo

Stress echo package with fully integrated and easily programmable interface to customize your needs. All features combine with S9, to deliver streamlined workflow for wall motion scoring and reporting.

It's obviously designed with the power of leadership SonoScape technology available to all clinicians. To sum it up, S9 is a multi-function power station with innovation for the future.

## Panoramic image

The S9 provides real-time panoramic imaging for bulky organs and masses for ease of measurement and diagnostic efficiency, rapidly generating accurate information on the position of lesions.

## Endovaginal 3D/4D probe

Detects the finest details earlier in the first trimester and in gynecology exams, enhancing your diagnostic confidence. Except for the quality of 3D/4D, S9 also allows excellent 2D imaging under endovaginal 3D/4D diagnose, which increases the diagnostic capacity and the satisfaction of the obstetric patients.



